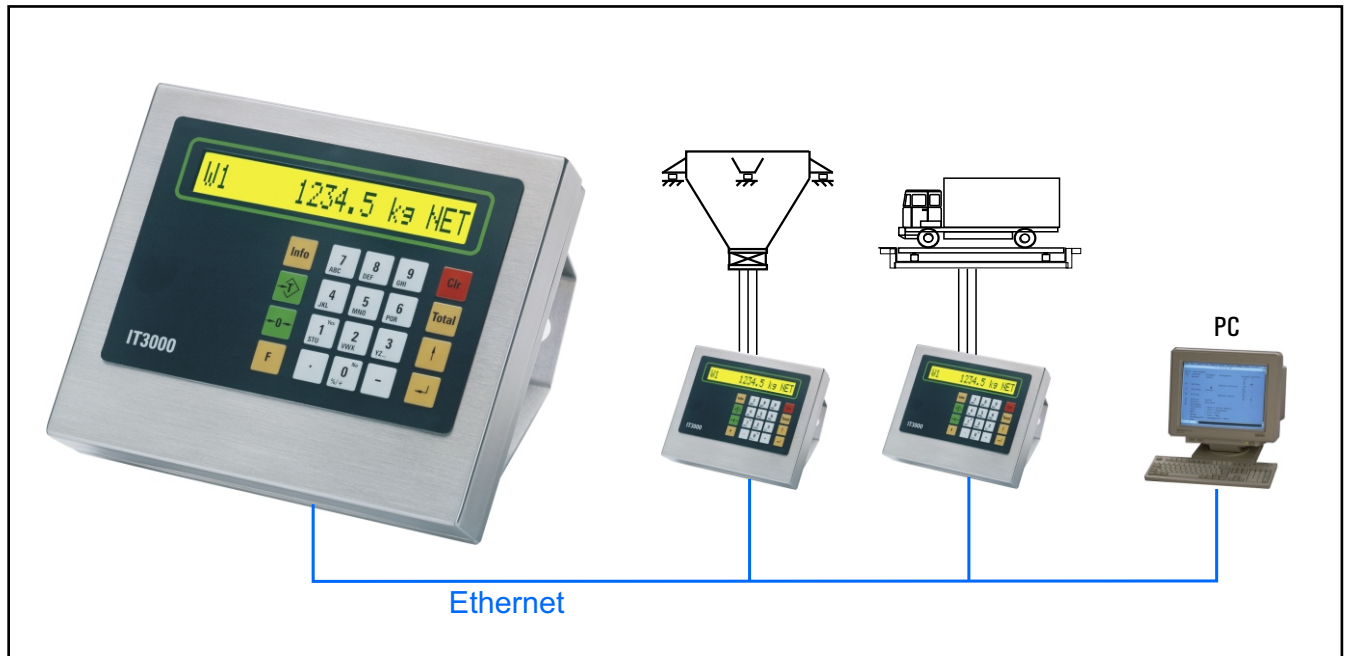


W&M approved Industrial Weighing Terminal with integrated Ethernet interface and Web Server



IT3000E is a universal industrial weighing terminal ready for the integration in Ethernet networks. It includes the well proven configurable standard programs:

- **BASIC** for simple weighing systems
- **COUNT** for parts counting
- **CHECK** for simple check scales
- **FILL** for simple filling systems
- **ONLINE** for remote controlled systems
- **TRUCK/ONLINE** for truck scale systems with online PC connection

Parameters can be edited via PC with the **IT3000 Configurator** PC tool or by means of a web browser **directly over the network**.

After each weighing cycle **weight, date/time** and the entered IDs via Ethernet can be stored in a **file on a PC's harddisk**. This does not require any specific PC program.

In **PC ONLINEe Mode** the **IT3000E** can be remotely controlled from the PC via the Ethernet interface. The instruction set permits capturing of weight, taring, zero setting and dialog functions.

Any error condition, such as overload, along with date and time is recorded in a **log file** that can be viewed via web browser.

Option to store data in an internal W&M approved data archive or in a W&M approved file on PC harddisk.

Technical features:

Operation:

- Operator prompting via 20-character back-lit alphanumeric display. Data entry via sealed membrane keyboard with numeric and function keys.

Weighing electronics:

- Integrated signal amplifier for connection of up to 8 strain gauge loadcells using 4- or 6-wire technology
- Calibration as single or multiple-range and as single or multi-interval scale
- Weights and Measures approved resolution of 6,000d with a maximum preload of 80%, 524,000d internal resolution
- 50 filtered updates / sec
- Calibration is made either via display and keyboard of the IT3000E or over the Ethernet interface.

Ethernet interface:

- Integrated Ethernet interface, with selectable IP address for 10/100BASE-T networks, RJ45 connector
- Configuration with PC program 'EtherPort Tool' over the network.

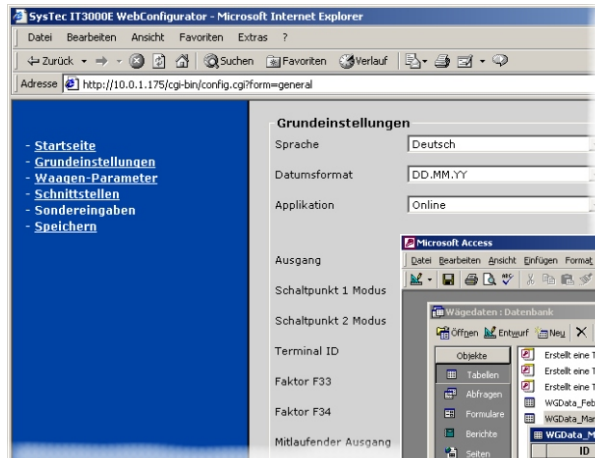
Security:

- Data is retained in the event of power loss
- Password protection.

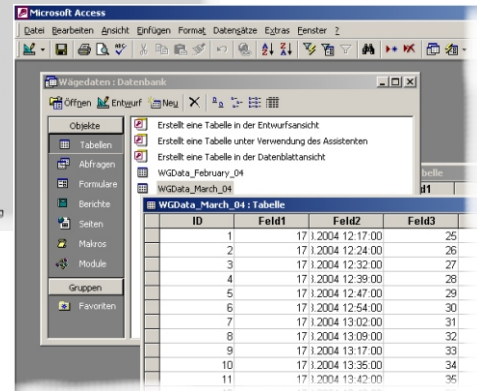
Interfaces:

One optional serial interface (RS232, RS485 or 20mA CL passive) to connect a printer, remote display or reference scale.

Integrated configuration program for setup and maintenance via a web browser



Access to weighing data from Office applications (MS-Access, MS-Excel) without additional software.



Digital inputs and outputs:

- Optional PIM module with 2 digital 24V inputs and 2 digital 24V outputs.

Enclosures:

- Compact IP65 stainless steel enclosure for desk or wall mounting
- Panel-mount enclosure, fascia plate protection to IP65.

Electrical connection:

110 (-15%) – 240 (+10%) VAC, wide range input, 50/60 Hz, power consumption max. 15 VA; Option: 12 – 30 VDC.

Operating temperature:

-10°C to +40°C, 95% relative humidity, non-condensing.

Options / accessories

- Realtime clock / error log file
- W&M approved data archive for approx. 40,000 records
- Ethernet connecting cable
- Protective dust and splash cover
- PC program PC *COM+* as communication object for online operation
- PC program PC *ARCHIVE* for the W&M approved storage of weighing data on PC harddisk.

CE IT3000E conforms to:
EN 45501, EN 50081-1,
EN 50082-1, EN 60950

EC-approval as non-automatic scale
MID approval as AWI and CW

Mounting versions and dimensions:

Desk / wall version



- Stainless steel housing IP65
- Suitable for desk-top or wall-mount installation
- Dimensions WxHxD: 225x190x145mm

Panel-mount version



- Stainless steel housing, fascia plate protected to IP65
- Installation in control panel
- Dimensions WxHxD: 216x156x61mm
- Cut-out in panel: 199x139mm